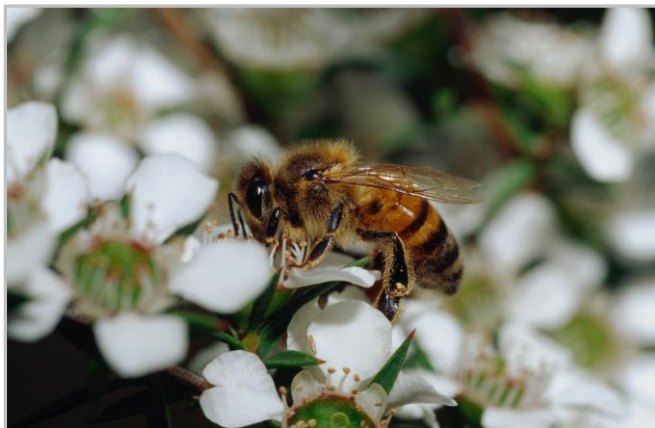




From Farm to the Medicinal Honey Forest™

- Small acres | Low maintenance | High return
- Pollinator havens | Regenerative agriculture | Medicinal honey production
- 5Ha modules | 2,500kg of honey | ¹A\$100,000 per annum

What if we could help reduce the maintenance that your property requires, increase the income generated from it, and help restore the balance of nature to your land? Our Medicinal Honey Forest™ (MHF) can provide you with profitable asset return with relatively little effort. The entire initial outlay is modelled to give return within 5 years with a regular income stream after 3 years. The initial investment is small and the return on investment is continuous while the MHF produces manuka honey.



You are not required to harvest anything yourself. You will need to maintain the forest system especially in its early years when plants are small. Some maintenance involving slashing, mowing, watering and pruning is needed. Gather By does not advocate the use of chemicals that may harm the bees, other insects or the environment. The Medicinal Honey Forest™ is a well-designed agri-system for regenerating farm fertility, providing an income stream to the grower and a safe haven for our pollinators; a plus for the environment, the landholder and the community. Participate in creating a greater food security initiative for Australia by building and supporting strong, healthy and disease resistant honeybee colonies in your area.

The Grower

You can now generate what is considered to be a low-effort income to supplement your on-farm and off-farm revenue by planting our specifically selected and unique range of clonal plants drawn from the Australian *Leptospermum* (Manuka) family of natives. These plants produce the nectar that honeybees harvest and then produce the high value Australian Manuka honeys from.

Diverse selection of hyper-DHA *Leptospermum* species



Gather By works with you to determine the appropriate mix and of *Leptospermum* plants for your site and bioregion. We will also adjust the MHF design to include a site appropriate selection of fodder plants and herbs to help maintaining the health and strength of the hives that are placed in the MHF.

MHF design is based on detailed consultation with you, the Grower, plus site analysis and soil testing. It lays out requirements for site preparation e.g. water infrastructure, soil preparation, plant selections, planting process, and an agreed timeline in the run up to installing plants. MHF installation can be done by the Grower according to Gather By's process or by Gather By.

A Grower can bring their Medicinal Honey Forest™ to maturity with strong nectar flows and healthy bees by following the site preparation, installation and management processes and principles laid out in the MHF site design and Gather By's Growers procedure.

The Growers Agreement details the arrangements for specialised beekeepers to bring in and manage beehives on the MHF site and to harvest honey during the production season. Growers are paid bulk wholesale price for the honeys produced on their sites. As with many commodities and agricultural produce these prices vary from season to season and Gather By keeps Growers updated on current market pricings.

¹ Season and site dependent, estimated at full production capacity, full \$40 per Kg paid to Grower as Beekeeper



Under the Growers Agreement, Gather By has sole right to purchase honey from the Grower at a market bulk wholesale prices less beekeeper expenses.

An MHF™ Licensing Fee of \$2 per plant per year is paid to Gather By. This fee allows Gather By to remain at the leading edge of Research and

Development and to ensure Growers are kept abreast of new agricultural processes and technologies. This fee is paid only when honey production starts and is netted off against honey purchased by Gather By.

Beekeeper (or Grower as beekeeper)

Specialist beekeepers are contracted to bring hives onto the MHF site, manage the apiary and maintain healthy bees and sustainably harvest premium grade Manuka honey. All honeys are tested at harvest in an Australian Manuka Honey Association accredited laboratory. Test results are shared with the Grower and are the basis for determining the value of the honey to be sold to Gather By.

Leptospermum trees are particularly hardy and grow well on the East coast of Australia.

If the Grower is the Beekeeper, the beekeeping expense is saved thus increasing the Growers return on investment.

Purchase price of manuka honey is determined by laboratory tests and by the current wholesale bulk market value for contaminant-free manuka honey. MGO rating of the honey varies with bioregion, site, rainfall, bee health and temperatures of the season. Currently this pricing ranges from \$16 to \$60 per kg.

Honey produced from the Medicinal Honey Forest™ is unlikely to have the same MGO rating from season to season and indeed within one season. As the season starts, activity will be lower, before peaking in the middle of the season, tapering off near the end.

Please note: All figures represented in this document are calculated using best endeavours only from financial models developed by Gather By and Industry data, and are therefore not to be relied upon in any way. The MHF is not an offer for an investment and is simply offered as a process for a grower to grow plants in order to potentially produce manuka honey.

Gather By, its associates, contractors, and employees, take no responsibility, other than by way of negligence, for manuka or table honey not being produced at expected volumes or MGO levels, or plants not growing to maturity, or plants not producing appropriate levels of nectar, or nectar at high DHA levels.

Planning your MHF

Site audits and soil testing must be undertaken prior to any commencement of agreement. Sites are analysed by Gather By's expert panel to determine suitability for the MHF, any remediation required on the site and a site appropriate design for the MHF.

A selection of three different plant sizes are available to suit budget, site and timeframe to plant maturity and honey production.

Pot type	Size	Full production	\$/plant
Small Prop pots	40mm x 40mm x 80mm	Year 5	\$2.30
Forestry tubes	50mm x 50mm x 120mm	Year 4	\$3.30
Large Pots	90mm x 90mm x 150mm	Year 3	\$4.60

For instance, the larger plant/pot size may assist in an earlier return due to the plants maturing earlier.

Water infrastructure is essential for a successful MHF™ planting and the production of nectar.

Allow \$5-\$7 per plant for plant installation (includes stakes, guards, weed mat, compost and planting).

	# Kg MGO honey	Grower	Beekeeper	Grower & Beekeeper
5 Hives per Ha	250-500kg /season	\$28 / kg ²	\$12/ kg	\$40/ kg ³
25 Hives per Module	1,250 - 2,500kg	\$35,000 - \$105,600	\$15,000 - \$45,000	\$50,000 - \$150,000

Matt Blomfield
Founder & CEO

m. +61 414 759 745
e. matt@gatherby.org
w. gatherby.org

Herbert Haes

Grower & Partner Engagement

m. +61 418 464 550
e. hello@gatherby.org
w. gatherby.org

² Amount averaged across whole season, net of beekeeper expenses, paid on harvest and MGO levels tested.

³ Amount based on MGO level around 500 ppm